





# your VOTE is your VOICE

## 2024 BOARD OF DIRECTORS

# Thank You

Marci Boucher, PSA I, 209-918-1080  
Don Allen, PSA I, 262-939-8586  
Claudia Simonson, PSA II, 312-925-2483  
Mike Palazzola, PSA III, 262-412-9729  
Memo Fachino, PSA IV, 757-738-2685  
Carmen Gaspero PSA IV, 262-583-2684  
Meg Richardson, PSA IV, 262-880-4733  
Dan Crispin, PSA V, 262-681-0399  
Cary Anastasio, PSA VI, 262-902-2885  
Katie White, PSA VII, 262-902-9213  
Bob Randleman, PSA VIII, 262-497-5136

## IN MEMORY OF NANCY HESS

If you would like to donate to the “Hess Tree Fund” to help WMC replace trees in the common areas throughout Wind Meadows, in memory of Nancy Hess, please make your donation by sending a check to Wind Meadows, c/o WPI, 6939 Mariner Drive, Racine, WI 53406. Please mark Hess Tree Fund in the memo of your check. We thank you in advance for your in kind donation.

In 2025 it would  
be nice to fill in  
some of the open  
spaces on Main St.



# HOW DIVERSE IS YOUR PORTFOLIO?

*Like a great holiday table,  
there should be plenty of options.*

Contact us today for a complimentary review of your current financial plan. We strive to ensure you're aware of all the options that may be available to you while keeping tax efficiency top of mind.

## HAPPY HOLIDAYS FROM ALL OF US!

*Proudly serving Wind Point as your Financial Professional!*



Mike Gorichanaz, Financial Advisor  
mikeg@mgawealthmgt.com  
www.mgawealthmanagement.com  
(262) 898-1694



Securities offered through Avantax Investment Services<sup>SM</sup>, member FINRA, SIPC. Investment advisory services offered through Avantax Advisory Services<sup>SM</sup>.  
Insurance services offered through an Avantax affiliated insurance agency. 3200 Olympus Blvd, Suite 100, Dallas, TX 75019, 972-870-6000.

All ads are paid advertisements. Services are not necessarily endorsed by the WMC.



**TIRED OF WRITING CHECKS OR SETTING UP BANK PAYMENTS FOR YOUR MONTHLY DUES?**

October is the time of year to make a change on how you pay your monthly homeowners fee. If you are tired of writing checks or remembering to send a bill pay bank payment to the Arizona address then sign up for ACH auto withdrawal through the WPI office. Request an ACH form at [wmc@wpiracine.com](mailto:wmc@wpiracine.com) or call 262-639-8974. Fill out the form by 11/30/24 and beginning January 2025, your dues will be auto withdrawn from your account between the 5th-8th of each month. If you need to cancel or change the account, just call the office. This is a safe, simple way to pay your dues on time every month. Easy Peasy and no more \$50 late fees!

**AUTHORIZATION AGREEMENT FOR DIRECT PAYMENTS (ACH DEBITS)**

**NOTE: A VOIDED CHECK MUST BE ATTACHED TO THIS FORM TO BE PROCESSED PROPERLY**

I (we) hereby authorize Washington Properties, Inc., hereinafter called "Company", to initiate debit entries to my (our)  Checking Account or  Savings Account (select one) indicated below at the depository financial institution named below, hereinafter called "Depository," and to debit the same to such account for the purpose of collection assessments for my community association. I (we) understand that this debit will occur on or about the 5<sup>th</sup> of each month in which assessment payments are due. I (we) acknowledge that the origination of ACH transactions to my (our) account must comply with the provisions of United States law.

Depository Name: \_\_\_\_\_  
 City: \_\_\_\_\_ State: \_\_\_\_\_ Zip: \_\_\_\_\_  
 Routing Number (9 digits): \_\_\_\_\_ Account Number: \_\_\_\_\_  
 This authorization is to remain in full force and effect until Company has received written notification from me (or either of us) of its termination in such time, and in such manner, as to afford Company and Depository a reasonable opportunity to act on it.  
 Association Name: \_\_\_\_\_  
 Name(s): \_\_\_\_\_ (Please print) \_\_\_\_\_ (Please print)  
 Address: \_\_\_\_\_  
 Signature(s): \_\_\_\_\_  
 Date: \_\_\_\_\_ Effective Date: \_\_\_\_\_  
 Phone Number: \_\_\_\_\_

**PLEASE RETURN FORM AND VOIDED CHECK TO:**  
 Washington Properties, Inc.  
 6939 Mariner Dr.  
 Racine, WI 53406

**2024 WE ENERGIES COOKIE BOOK**

The smell and taste of your favorite cookie can send you back in time. The 2024 We Energies Cookie Book highlights childhood memories spanning several generations. Pick up your copy and start creating new memories. Mark your calendar for a distribution event near you. [View 2024 Cookie Book distribution events](#)  
 The Cookie Book will also be available for download starting Nov.1st. All distribution events are drive-thru only. Somers (Racine/Kenosha) Hwy KR (just west of Hwy 32) Nov 13th, 9am-1pm.

**JOHN'S DISPOSAL SERVICE, INC.**

All trash must be in a secure and sanitary container and may be placed outside no earlier than 6:00 p.m. the night before scheduled pickup. Containers must be stored out of sight the same day following pickup. **Recycling collection and yard waste collection** is every other Monday unless the Monday is a holiday. **The November recycling and yard waste dates are Monday, November 11th and November 25th.** For more information contact John's Disposal at (262) 473-4700.



**New Community Room Available for your favorite activity**

**Leisure Center Activity Room**

**The possibilities are endless .....**

**ANNUAL USER FEE is as follows, based on frequency:**

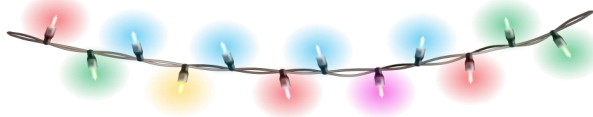
- 1-12 visits/year = \$25
- 13-24 visits/year = \$40
- 25+ visits/year = \$60

Club usage restricted to WMC residents only  
 Contact Carrie at WPI 262-639-8974



**HOLIDAY DECORATIONS**

Decorations may be installed for the winter holiday season from November 15th through January 15th.

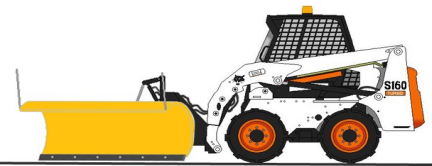


**SNOW (shhh) REMOVAL**

Snow removal occurs in the **Patio, Village, Manor, Garden and Prairie Meadows Homes** when snow accumulation on the ground reaches 1-inch wet or 2-inches dry from one or more snowfalls and snow removal will continue around the clock if necessary. Courts will be opened first then the parking spaces and driveways. If you knock down a snow stake, let the WMC office know.

Note: The Village of Wind Point plows Single Family Courts.

2012 BoBC AT S160 WITH SNOW PLOW



Wind Meadows Corporation

2024 UPCOMING  
2025 EVENTS

8 September	Annual Picnic
17 October	BINGO
15 November	Trivia
16 January	Candy Bar Bingo
7 February	Trivia

